

ART ACADEMY
LONDON



Prospectus
2024/25



Prospectus
2024/25

ART ACADEMY
LONDON



Architect's render of our new Bankside campus

Contents

A Welcome from our Principal	3
Our Approach	5
Our Tutors	6
Our Programmes	8
Pre-Degree	
Certificate In Fine Art	11
Certificate in Portraiture	12
Fine Art Foundation	15
Undergraduate	
BA (Hons) Fine Art	21
BA (Hons) Contemporary Portraiture	22
Components and Modules	24
Elective Skills Workshops	29
Postgraduate	43
MA Fine Art	
Studying at AAL	45
Apply	51
Funding & Bursaries	52
Visit Us	54

Our prospectus gives you a picture of what it is like to study at AAL and acts as a guide to fees and entry requirements at the time of publishing in September 2023 for 2023/24 entry. Always refer to our website for up-to-date and detailed fee and course information.



Rob Pepper alongside former Tate Director Frances Morris at our 2021 Graduation Ceremony at the Tate Modern

A welcome from our Principal

I'm very pleased that you're considering studying with us at Art Academy London. We were founded over 20 years ago by artists to offer something different: the best of an old-school atelier combined with the vibrancy and diversity of a contemporary art school.

It's important that we remain an artist-led institution: all our courses are designed and delivered by practising artists, including prize-winners, members of leading arts organisations and those with work in national collections. And with our small class sizes, you'll receive tailored tuition from experts. You'll also benefit from the highest tutor contact hours of any fine art course in the UK, and regular one-to-one tutorials to support your personal and professional development.

Here, we'll give you all the tools you need to take your next step as an artist - whether that's preparing to study at university with our Fine Art Foundation, realising your own art practice with our BAs, or learning technical skills with our Certificate programme. To date, we've helped train around 30,000 people across our different academic and short courses.

We think art education is truly transformative, so it's always a pleasure to see our students discover their passions and aptitudes at the Academy. We don't define what you make by subscribing to a house style: instead, we give you the freedom, skills and support to define yourself.

You'll learn both traditional and contemporary skills with us, across a range of disciplines. You'll also be stretched to think critically about your work and consider art history, art theory and wider contexts. All of this is designed to help you shape yourself as an artist.

The Academy is a very special place, ask any of our students and they'll say the same thing - that we can offer you an environment unlike anywhere else. You'll join our vibrant community of artists and creatives. You'll be nurtured - and challenged - to become the best artist you can be, as well as have fun and make good connections with like minded people.

Rob Pepper, Principal



Our Approach

We've built a reputation for teaching technical skills, encouraging and enabling creative vision, and supporting everyone who joins our vibrant and welcoming community.

From short, evening and weekend courses to our academic programmes for people serious about developing their artistic practice and becoming professionals, we offer the best quality art tuition to support your development.

No matter which pathway you choose, whether you're studying on one of our undergraduate degrees or joining our Certificate programmes, you'll benefit from tailored support and guidance. Central to our philosophy is the view that the best teaching happens in small supportive groups, so we keep our class sizes to a maximum of 15 students. When studying in a larger group, for example with your cohort, we ensure the ratio of tutors to students remains 1 to 15. This gives our students access to regular hands-on tuition.

Our students typically study a minimum of 15 hours per week on our full-time BA and Foundation programmes, with the option of more. This minimum is five times the amount received on a comparable BA at the UK's other leading institutions. This personal approach allows our students the time to master core artistic skills and unlock their creative potential.

We offer the highest number of tutor contact hours of any higher education art school in the UK.

We believe the best way to learn is from experts, so our classes are taught by highly skilled, practising artists, including prize-winners, members of leading art organisations and artists with work in national collections.

Our Tutors



Rob Pepper, Principal

Rob is an international keynote speaker on the arts, education, creativity and regularly exhibits worldwide.



Sue Spaul, Director of Programmes

Sue is a figurative painter and exhibits in London. She has had her work shown in Mall Galleries as part of the Royal Society of Portrait Painters Exhibition and the Federation of British Artists' Exhibition.



Alison Hand, BA Fine Art Programme Leader

Alison holds an MA in Painting from the RCA. She has won many awards and is also a published art writer. She was a Board Director for Artgener and undertook doctoral research at the Bartlett School of Architecture.



Sadie Lee, BA Contemporary Portraiture Programme Leader

Sadie Lee is an award-winning British figurative painter. Her challenging paintings focus on a range of subjects, including sexuality, gender and the aging body.



Julian Wild, Sculpture Lead

Julian is a sculptor with 20 years' teaching experience, who has exhibited at Chatsworth House. He has completed commissions for Cass Sculpture Foundation, Fidelity Investments and Oxford University, and is Vice-President of The Royal Society of Sculptors.



Lynn Dennison, Foundation Programme Leader

Lynn holds a BA in Fine Art from the Slade School of Art and an MA in Fine Art from Central Saint Martins. She has exhibited internationally, and is the winner of the 2015 RBS Sculpture Shock Award.



Zoe Toolan, Certificate in Fine Art Programme Leader

Zoe is passionate about radical pedagogy. Her work has been shown at events such as Antiuniversity and FaB Festival, and projects have been supported by bodies including the Live Art Development Agency and Axisweb.



Edward Sutcliffe, Certificate in Portraiture Programme Leader

Edward is a figurative painter. His work has been shown in London, Dubai, Seoul and has been included in the BP Portrait Award Exhibition at the National Portrait Gallery eight times.



Briony Marshall, Professional Development Leader

Briony is a sculptor and installation artist, and has had residencies at Pangolin London and Brian Mercer Bronze Casting in Italy. In 2015, Briony was shortlisted for the First@108 Public Art Award.



Tom Morgan Evans, Critical and Contextual Studies Leader

Tom has 10 years' experience teaching at UCL, the Courtauld Institute of Art and the University of Kent. His specialism is modern art in the US, and he has produced a book about Andy Warhol. Tom also regularly writes for journals.

Our Programmes

Whether you want to study full or part-time, we have a range of programmes to suit you.

From our Certificates and Foundation, to our degrees, we'll help you find the right path to becoming the best artist you can be.

Pre-Degree (internally awarded)

Fine Art Foundation
(1 year FT, 2 years PT)

Certificate in Fine Art
(flexible options to complete in 1 or 2 years)

Certificate in Portraiture
(flexible options to complete in 1 or 2 years)

Undergraduate Degrees

BA (Hons) Fine Art
(3 years FT, 6 years PT).

BA (Hons) Contemporary Portraiture
(3 years FT, 6 years PT)

Postgraduate Degree

MA Fine Art*
(1 year FT, 2 years PT)

Art Academy London is approved by The Open University as an appropriate organisation to offer higher education programmes leading to Open University validated awards.

** From September 2025, Subject to validation by the Open University.*

How we teach

We'll stretch your thinking at the same time as building your skills in multiple ways. We don't subscribe to the view that there is one way to train an artist. We start with the individual and invest time, supporting you through tailored, hands-on tuition. We believe in opening the mind every bit as much as we believe in training the eye and the hand.

You will be free to develop and express your vision in whatever language, style or medium best suits your intentions, but whatever the chosen medium, your work will require skill and consideration in its formal and conceptual aspects. A portrait should be as conceptually considered as an installation and an installation as carefully crafted as a portrait.

The actual process of creating is a continual balance between thought and intuition, between the editorial, decision-making process, and the spontaneous flow of creativity. Considered marks, observed unintended accidents, and the subconscious knowledge that imbue the work all enrich the final piece.

Our Artistic Principles

Stimulus & Motivation

An artist's stimulus comes from a desire to respond to what resonates with them or has meaning to them as an individual, drawn from their experiences, passions and interests. Being true to their core motivation can create a unique artistic vision and is the starting point for developing the concept and intent for their art work.

Intention & Concept

The artist's intention is what they want to express, create, question or communicate through their work. Developing the concept is the way in which they refine their response to the original stimulus through examination, exploration and enquiry. This will begin to determine the best means of expressing their intention and communicating with the viewer.

In order to fully to develop a concept, this process needs to include rigorous, imaginative, lateral thinking and ingenuity; considering the idea as widely as possible. An effective concept will result in a work that opens new perspectives, experiences and understanding for the viewer.

Creative & Contextual Awareness

The artist practices within a personal, artistic, social, cultural & environmental context. It is essential for them to be aware of the context in which they are working. The artist should be cognisant of the surrounding artistic discourses. They need also to be mindful of the wider context in which they are working – cultural, social, political and environmental. They need to consider their responsibility to themselves, their peer group and artistic community, the art world and to wider society.

Visual Language & Craftspersonship

For an artist to develop their own artistic language, they need to understand the application, impact and relevance of their aesthetic decisions. Harmony, discord, measure, balance, volume, contrast, line, colour, composition and craftspersonship form part of the artist's language, through which they develop their own vocabulary to express their meaning. Craftspersonship encompasses skill in any media, whether traditional or contemporary.

Manifestation of intent

The artist manifests their intention for the work through the choices they make about their formal language, including media, material, technique and scale. The evaluation of these choices and their relationship to the artist's initial intention, even when these elements have been used intuitively, is essential for the effective expression of the creative idea.

Curation & Presentation

The presentation of a work in an exhibition, public space or other context is integral to the effectiveness of the piece. The presentation includes the treatment of space. It also refers to any verbal presentation by the artist about the work; how concise, considered and knowledgeable they are about the context in which they are working and their intentions for the work. All these aspects need to be carefully considered if the work is to fulfil its potential.

Certificate in Fine Art

Our Certificate programme is a bespoke, flexible way to study. It's ideal if you're serious about developing your technical art skills, but have limited time. The Certificate in Fine Art, allows you either to focus on one discipline or to work across multiple disciplines, from Painting, Drawing, 3D/ Sculpture or Digital Media.

The programme is made up of six Elective Skills Workshop courses, which you'll choose from a wide range available each term. These will teach you in-depth technical skills in your chosen discipline(s), increase your confidence and help cultivate your artistic interests.

You'll also have one tutorial per term, where you meet with the Certificate Programme Leader to discuss your work and your artistic progress one-to-one.

You can start your Certificate at the beginning of any term throughout the year, in either September, January or April.

Taking a Certificate course opens up an avenue of opportunity for you. At the end of the Certificate you will have the opportunity to exhibit your work at the annual Certificate Exhibition. Students are also able to take advantage of free places on the Academy's public courses (evening, weekend and short courses, subject to availability).

The Certificate is internally awarded; it is not part of the QCF (Qualifications and Credit Framework).



Tailor the programme to you

Elective Skills Workshop courses are common components to all our academic programmes at the Academy, so you will be working alongside a diverse group of students. You will choose your Electives from a range available each term. The day you attend will be dependent on the course you choose each term.

The Certificate is a flexible programme and can be customised to your needs. Should you wish to take a course in more than one discipline at the same time (painting and drawing, for instance), this can be arranged.



STUDY MODE Two days a week, 1 year / One day a week, 2 years.

Certificate in Portraiture

The Certificate in Portraiture provides a unique introduction to the exacting discipline of portraiture. Here you'll begin to learn the skills of portrait painting in small classes taught by practising artists, many of them eminent in their field. You'll explore some of the key components of this specialist genre, whilst being guided in tutorials with the Certificate in Portraiture Programme Leader as your work progresses.

The programme is made up of six Elective Skills Workshop courses, which you'll choose from a wide range of portrait and figure painting classes, including figure painting (both clothed and nude), portrait painting, self portrait, portrait drawing and anatomy. You'll learn about tone and colour, mixing flesh tones, lighting the model, composition and much more.

You'll meet with the Certificate Programme Leader to discuss your work and your artistic progress one-to-one.

You can start your Certificate at the beginning of any term throughout the year, in either September, January or April.

Taking a Certificate course opens up an avenue of opportunity for you. At the end of the Certificate you will have the opportunity to exhibit your work at the annual Certificate Exhibition. Students are also able to take advantage of free places on the Academy's public courses (evening, weekend and short courses, subject to availability).



The Certificate is internally awarded; it is not part of the QCF (Qualifications and Credit Framework).

Tailor the programme to you

Elective Skills Workshop courses are common components to all our academic programmes at the Academy, so you will be working alongside a diverse group of students. You will choose your Electives from a range available each term. The day you attend will be dependent on the course you choose each term.

The Certificate is a flexible programme and can be customised to your needs. Should you wish to take a course in more than one discipline at the same time (painting and drawing, for instance), this can be arranged.

STUDY MODE Two days a week, 1 year / One day a week, 2 years.

Total Certificate Course Fee
(1 or 2 years) (UK/EU)
£4,140

Per Term
over 2 years
£725

Per Term: 1 year
accelerated mode
£1,449



Fine Art Foundation

Our internally-awarded Foundation course is a proven route to the university or art school of your choice. Because we are not bound by the syllabus of an exam board, we have developed our own, unique curriculum, which teaches you skills across a range of disciplines and techniques, as well as developing your conceptual thinking

This means our Foundation is completely different from others; we offer a highly individual, bespoke programme of study, where students learn skills and are given the freedom to explore a wide range of disciplines and approaches to fine art practice. However, like other Foundation courses, our Foundation is subject to external moderation to ensure that our standards are comparable to national benchmarks.

We'll teach you practical techniques and provide weekly personal tutorial support to develop your creativity, as well as your conceptual and critical knowledge. We will introduce you to a range of disciplines so you can explore which areas of fine art best suit you. You'll spend three tutored days a week studying at the Academy and at least one further day developing your project work independently in your dedicated studio space. Throughout the year, visiting tutors and the Foundation Programme Leader will monitor your progress. The Foundation will equip you with a comprehensive portfolio, honed art skills and a clear sense of your self as an artist, increasing your chances of achieving a place at the art school or university of your choice.

"My experience at the Academy has been fantastic and it has shaped my practice. It is the ability of the tutors to offer focused, relevant and non-judgemental feedback, and that has been key. The tutors don't tell you what to do but encourage and pull out your own potential, which is a challenge but also brilliant."

Kathy de Zilwa
Fine Art Foundation

The Fine Art Foundation is internally awarded; it is not part of the QCF (Qualifications and Credit Framework).

Course Structure

Autumn Term

Your first term is spent actively exploring a range of ideas. We want you to discover the joy of experimentation in a wide range of media. In this term you'll be taught skills in four disciplines by expert artists to give you an introductory awareness; sculpture & installation, drawing, painting, and digital media, all of which you will explore further in your first Studio Practice project. You will also participate in three Critical & Contextual Studies sessions.

STUDY MODE Full Time, 1 year / Part Time, 2 years.

Spring Term

Building on your experimentation in the autumn term, you'll select Elective Skills Workshop courses in 2D, 3D and Digital Media that reflect your interests and abilities and give you a greater understanding of different media and techniques. A further three Critical & Contextual Studies sessions will help you develop increasing contextual awareness, culminating in a short essay.

Summer Term

In the third term you'll work towards your end of year exhibition, as well as completing one Elective Skills Workshop to complement and support the development of your self-initiated personal project.

"Before I came to the Academy, I wasn't very experienced. I was very "normal" in what I did. What the Academy has really done is stretch me to do things I would have never thought to do, enormous sculptures in materials that I have never used before. The Academy has moved me from painting pretty pictures to conceptually dense works."

Mark Allen
Fine Art Foundation

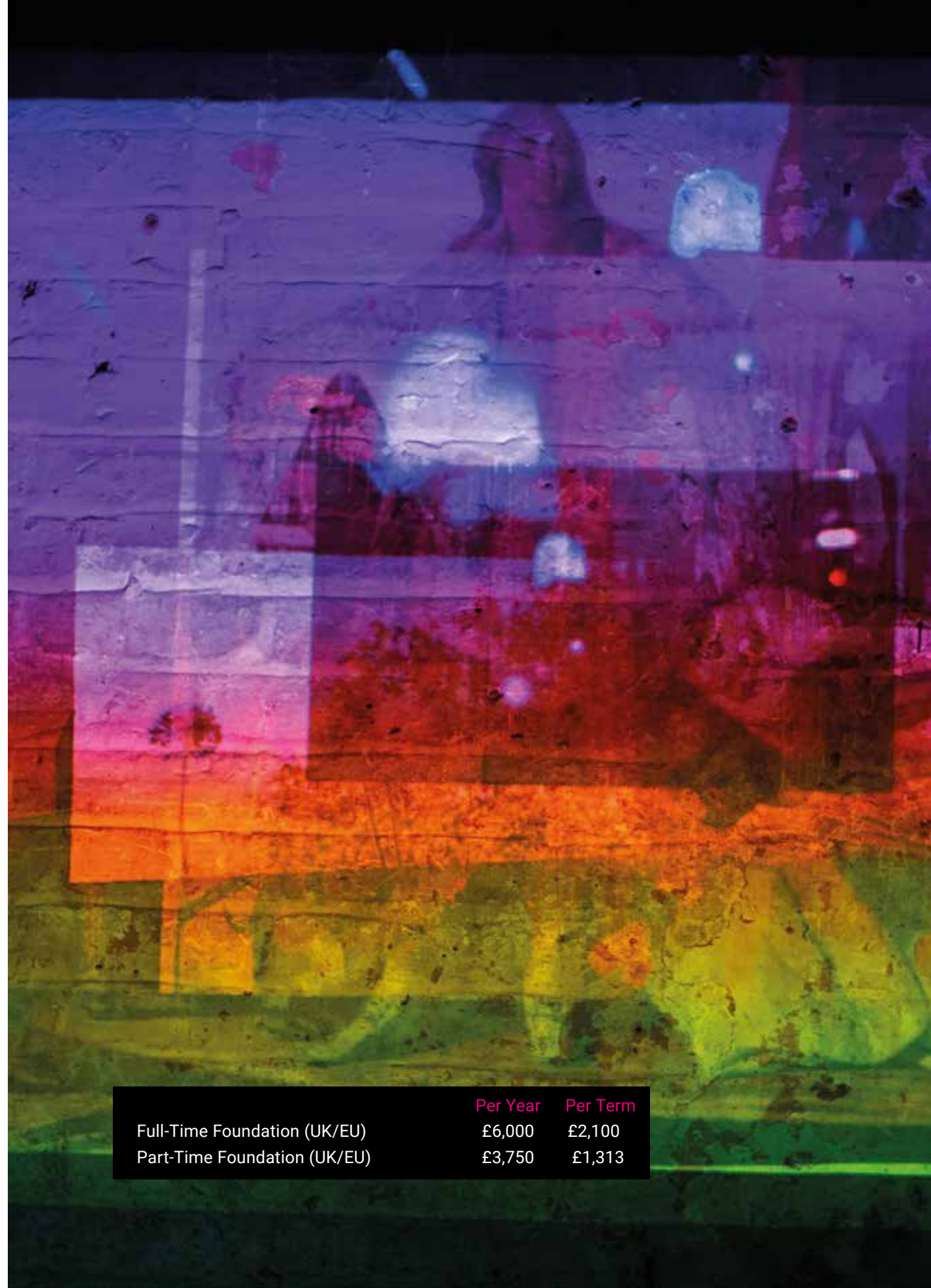
The Fine Art Foundation is designed to help you prepare for studying fine art at undergraduate level. We'll make sure that you have a clear understanding of your chosen subject area and which institutions will best suit you. You'll have experience of undertaking academic research and writing, attend a mock interview and receive help with the organisation and presentation of your portfolio. By the time you complete the programme, you'll be comfortable talking about your developing artistic practice.

Students are also able to take advantage of free places on the Academy's public courses (evening, weekend and short courses, subject to availability).

Many students enjoy our unique teaching approach and culture, choosing to stay on and continue their development on one of our own degrees (see page 21). We've also helped our Foundation students attain places at institutions across the UK, including Chelsea College of Arts, Central Saint Martins, Glasgow School of Art and Slade School of Art, amongst others.



artacademy.ac.uk/fine-art-foundation



	Per Year	Per Term
Full-Time Foundation (UK/EU)	£6,000	£2,100
Part-Time Foundation (UK/EU)	£3,750	£1,313

The Elective Skills Workshops make up a significant part of all our academic courses, including both Certificate programmes and the Fine Art Foundation.

Here is a brief overview. For a full breakdown of various Elective Skills Workshops please see page 29.

Painting

Painting Elective Skills Workshops cover a wide range of painting disciplines, from figure and portrait painting, to landscapes and abstract art. There's plenty of specific skills development, including looking at painting media and methods, light, colour and tone, composition and the palette.

Drawing

Drawing is a core tool for every artist, and our Elective Skills Workshops are a fantastic opportunity for you to hone this skill. You'll look at the elements of drawing, materials and methods, tone and light, composition, mark-making and mass. You'll explore figure and portrait drawing as well as expressive and creative drawing.

Sculpture & 3D

Our roots are in championing and training sculptors, and we offer Elective Skills Workshops in a diverse range of sculpture disciplines; from portraiture and figure modelling techniques to creative and abstract sculpture, ceramics and stone carving. You'll learn about armature-making, plaster and wire and how to construct moulds. You can also explore sculpting with metal, learning about steel-welding and fabrication.



Printmaking

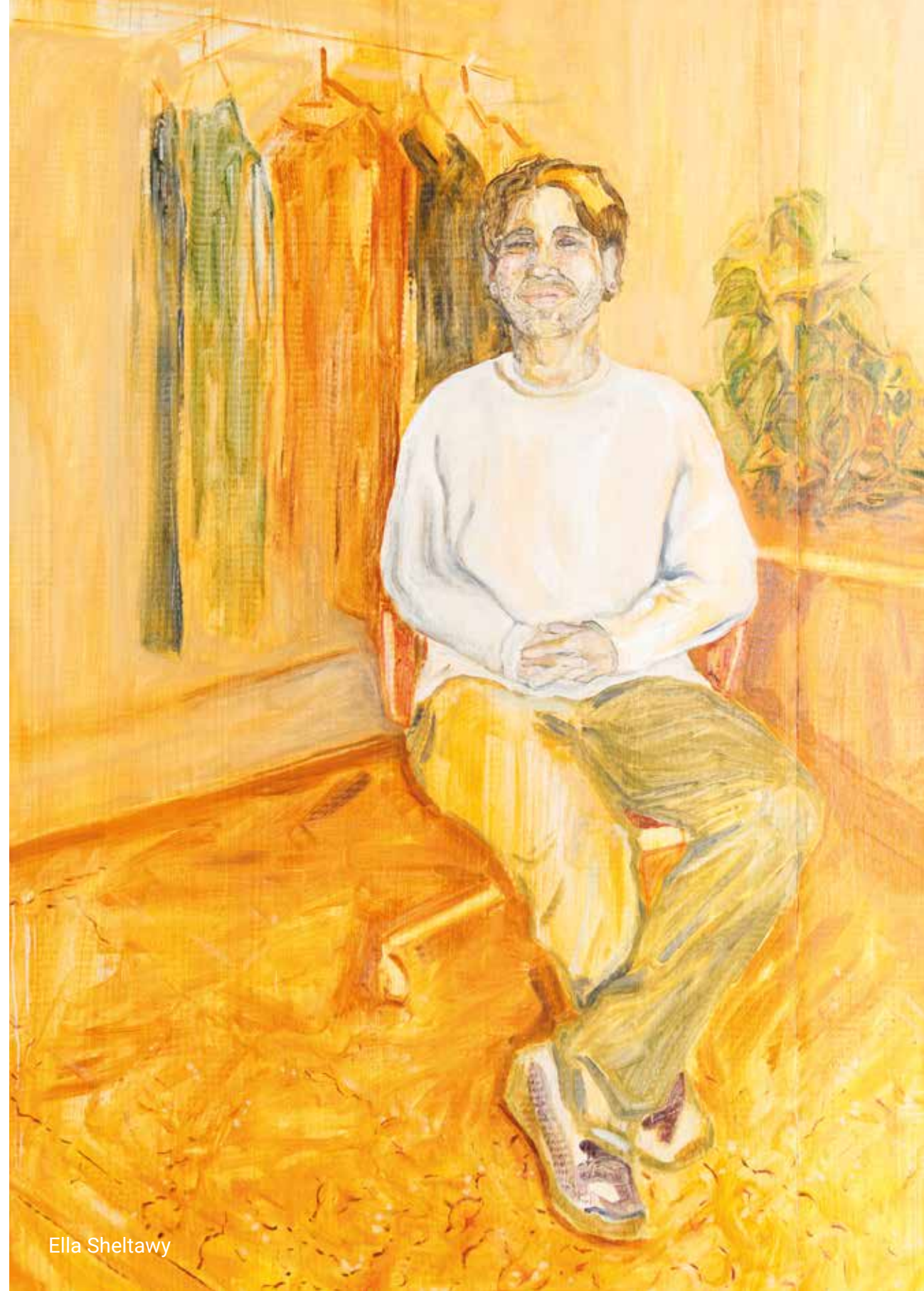
These Elective Skills Workshops cover a broad range of intaglio and relief printmaking techniques, including etching, linoleum, woodcut, dry-point, collagraph, photopolymer and photo-etching. You'll develop ideas through self-led projects to achieve a portfolio of contemporary prints.

Digital Art

Our Digital Suite provides the opportunity to undertake Elective Skills Workshops in Animation, moving image and video art, Extended Reality, including Augmented and Virtual Realities. You'll consider how our familiarity with the "screen" impacts contemporary art practices.

Portraiture

There are a number of Elective Skills Workshops that focus on painting. Portrait certificate students also usually choose to study related drawing electives, such as anatomy and portrait drawing.



Ella Sheltawy

BA (Hons) Fine Art

Our BA in Fine Art is unique. It offers some of the highest skills tuition anywhere in the UK as part of a carefully structured programme to support your creative and critical development as an artist.

There are three stages to our BA, which you can choose to study full-time (over three years) or part-time (typically over six years, although you may be able to study over five years).

As well as helping you develop the in-depth technical skills needed to take your art practice forward, you'll be encouraged to think critically about the wider theoretical and historical contexts of your discipline(s), and apply that knowledge to your practical work.

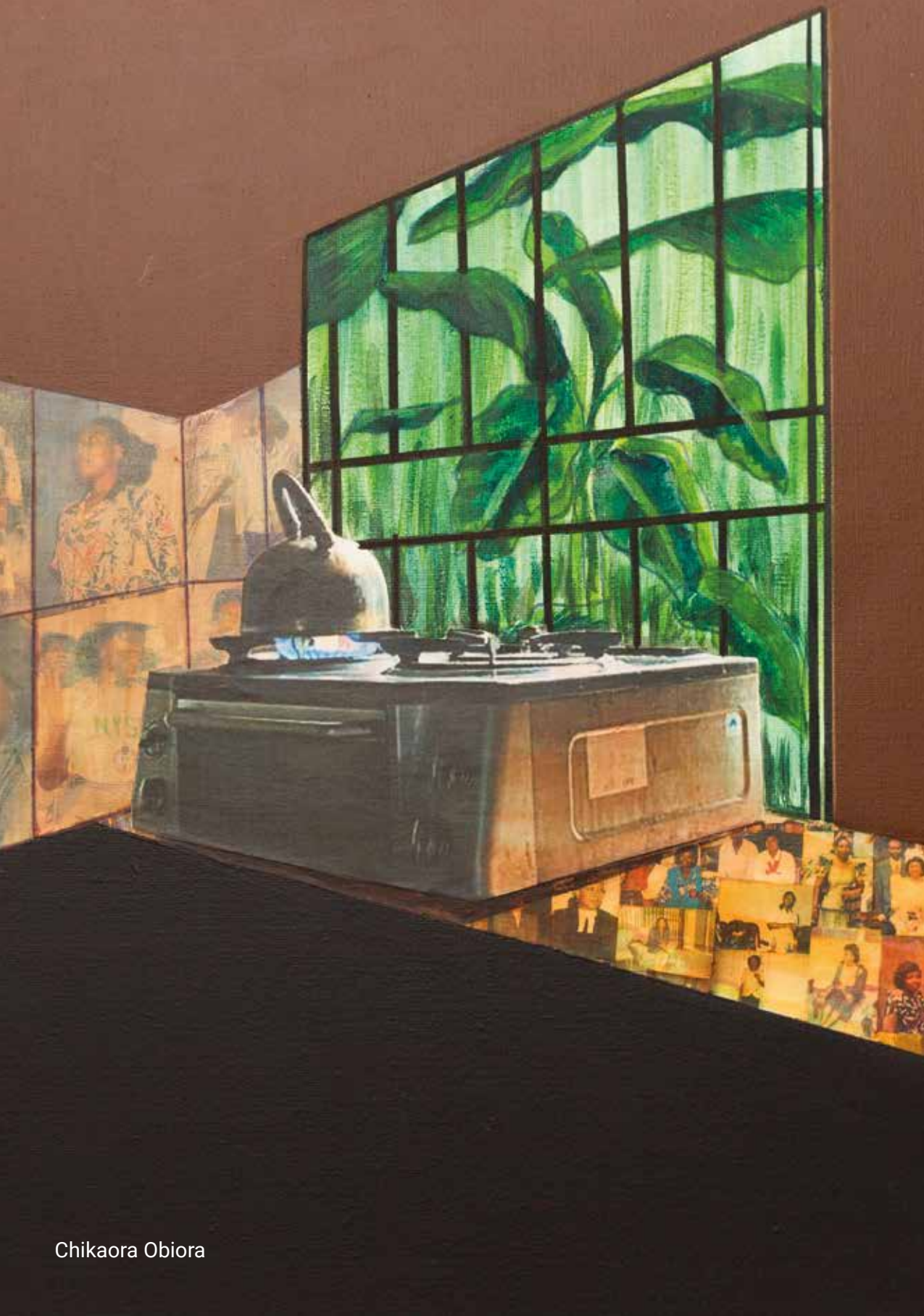
In Stage 2 all BA students undertake a live commission for their fourth Studio Practice module, working with a client, creating a work in response to their brief.

By the time you graduate, you'll have the confidence and ability to exhibit your work, take on commissions, apply for further study and/or find work in the creative industries.

To further enrich your study, you'll have access to lectures and talks by eminent visiting artists, open access sessions in

our Print Studio, Digital Suite and Wood and Metal Workshop, and you can drop in to life drawing sessions on weekend mornings. You can also take advantage of free places on our other evening, weekend and short courses (these are available at the discretion of the Academy and subject to availability).

Our BA (Hons) Fine Art is validated by The Open University.



BA (Hons) Contemporary Portraiture

Embrace the diversity of contemporary art practice while developing skills in portraiture and figurative painting in this one-of-a-kind specialist programme.

The BA (Hons) Degree in Contemporary Portraiture is intended for students who want to establish a career as a portrait or figurative artist and encourages you to embrace the diversity of contemporary art practices and approaches throughout the programme. Whilst your focus will primarily be on portraiture and the figure throughout the programme, it aims to challenge preconceptions about the genre of portraiture and figurative painting, encouraging you to develop an individual and unique artistic voice that will be distinct enough to support a career in the commercial and competitive environment of portraiture.

We will provide you with the opportunity to develop and hone to a very high standard the skills and techniques needed for portraiture and figurative painting. You'll also be encouraged to think critically about the wider theoretical and historical contexts of contemporary portraiture and apply that knowledge to your practical work.

You'll work with your peers to mount an exhibition of portraiture and you'll undertake a commission, working with a client, creating a portrait in response to their brief.

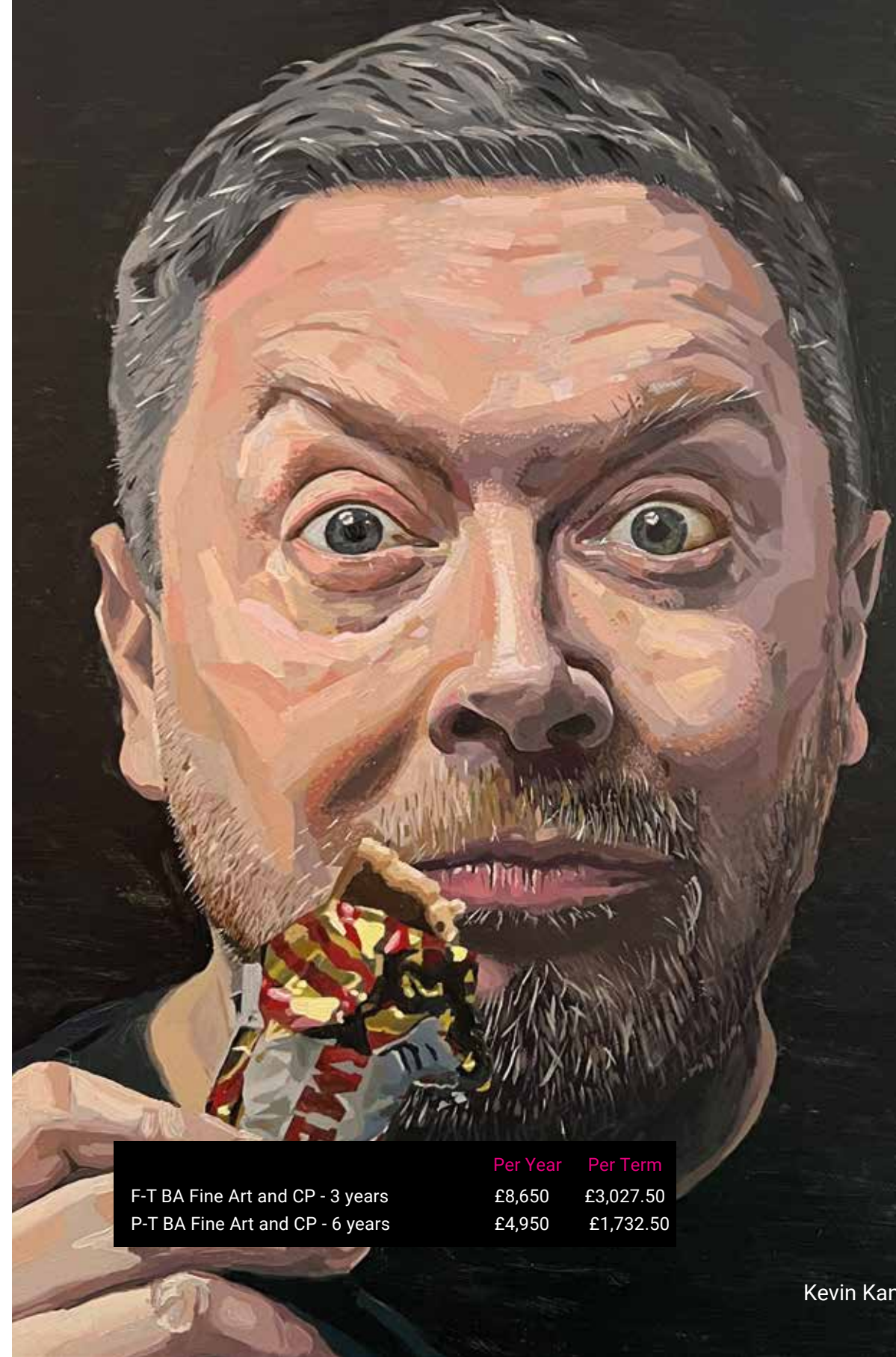
artacademy.ac.uk/ba-contemporary-portraiture

Our BA degree in Contemporary Portraiture is the only BA of its kind in Europe.

And to further enrich your study, you'll have access to lectures and talks by eminent visiting artists, open access sessions in our print studio, a session learning to sculpt a portrait head (and access to further sculpture classes). You can also drop in to life drawing sessions on weekend mornings.

All academic students are able to take advantage of free places on the Academy's public courses (evening, weekend and short courses). These are available at the discretion of the Academy and subject to availability.

Our BA (Hons) Contemporary Portraiture is validated by The Open University.



	Per Year	Per Term
F-T BA Fine Art and CP - 3 years	£8,650	£3,027.50
P-T BA Fine Art and CP - 6 years	£4,950	£1,732.50

Kevin Kane

The four main components of our degrees

Studio Practice Modules

These are where you develop personal projects in response to a series of briefs. These modules are taught through one-to-one tutorials, group critiques, workshops, lectures and practical work in a studio. As part of Studio Practice, you'll also undertake contextual research to support each of your personal projects, which includes preparatory work, research, and pieces of reflective and discursive writing. Critical & Contextual Studies tutors regularly join critiques to help you develop knowledge and understanding of how the theoretical and conceptual concerns of your work sits within the context of wider discourses.

In the third term of Stage 1 (see page 26 for a breakdown of programme stages), BA (Hons) Contemporary Portraiture students undertake the Exhibition module, where they work with their peers to a common brief to create work for an exhibition, which they also curate. In Stage 2 all BA students undertake a live commission for their forth Studio Practice module, working with a client, creating a work or portrait in response to their brief.

Elective Skills Workshop Courses

Our Elective Skills Workshop courses provide you with intensive training in the technical skills you'll need to develop your creative vision and directly support your Studio Practice modules. If studying on our BA (Hons) Contemporary Portraiture, this includes specialist courses in all aspects of portraiture and figurative art, both contemporary and more traditional. Each course runs for one full day per week per term.

You'll have a choice of different Workshop courses over each year of the programme, across a range of disciplines, typically taking two courses per term if you're studying full time. See page 29 for an example list of courses.

Critical & Contextual Studies

Here you will build your contextual knowledge by studying and analysing artistic discourses and theories, and modern and contemporary practice. You'll learn through lectures, seminars, group activities and gallery visits. These modules are typically assessed through written work.

Professional Development

The Professional Development modules look at everything from PR and branding, to completing residencies and taxation for the self-employed artist. You'll create a website, use marketing and business tools, and attend relevant workshops and lectures.



Fiona Feng

The three stages of our degrees

Stage 1: Explore and Investigate

You'll build the foundations of your knowledge and ideas to inform your work in Stages 1 and 2.

You'll undertake one Studio Practice module per term (both through taught sessions and independent study), where you'll identify areas of interest, take risks and experiment. You'll choose up to three Elective Skills Workshops each term (including compulsory drawing courses over Stages 1 and 2, and a digital elective in Stage 1).

The first Critical & Contextual studies module (Portraiture & Its Contexts, for BA Contemporary Portraiture students) will introduce you to the critical evaluation of art and develop your academic research and writing skills.

If you're studying part time, you'll have one taught session of Studio Practice across three of the six terms available, and attend one to two Elective Skills Workshops each term.

Stage 2: Self reflection and Analysis

Your fourth Studio Practice project is an exciting live commission, where you'll source a client, negotiate a relationship and complete a work. The other two Studio Practice modules focus on developing your own art practice, preparing you for Stage 3. In Stage 2, you'll be given your own studio space to work on your Studio Practice modules independently, outside taught sessions.

Whether you're studying full or part time, you'll pick between two and five Elective Skills Workshop courses across Stage 2

to help refine your techniques within your chosen discipline(s).

The second Critical & Contextual Studies (or Portraiture & Its Contexts) module builds upon the first, approaching material at a more advanced level, with a focus on critical thinking, theory and discussion.

To help prepare you for life as a practising artist, you'll complete a Professional Development module, which looks at everything from PR and branding, to completing residencies and taxation for the self-employed artist. You'll create a website, use marketing and business tools, and attend relevant workshops and lectures.

Stage 3: Realisation

The final stage of your BA is where you really come into your own as an artist. You'll focus on creating a major body of work that has been self-directed in your own dedicated studio space.

You'll submit a supporting portfolio of developmental work and take part in an oral examination with a team of tutors and an external assessor, where you'll answer questions about your project development, curatorial choices and contextual knowledge. To develop the skills needed for your final personal project, you'll attend one Elective Skills Workshop a term and complete a Professional Development module that focuses on investigating an area of practice relevant to your own progression goals. You'll also complete an extended contextual research project that supports the development of your practical work, guided by your tutor in one-to-one sessions.





Elective Skills Workshops

Unique to the Academy, our Elective Skills Workshops form a significant part of all our academic courses, supporting your Studio Practice. They also make up the programmes of study for our Certificates (see page 11).

Designed to provide you with intensive training in the technical skills that you'll need to develop your creative vision, our Elective Skills Workshops allow you to experiment with multiple disciplines including painting, drawing, 3D/sculpture and installation, digital media and printmaking.

In this section, you'll find a list of Elective Skills Workshops typically available in an academic year. Please note, this is subject to change and you'll be advised each term which electives are coming up for enrolment in the following term

Digital

Animation in Art

Understand how various types of animation can be created and used in moving image work. Through practical workshops, learn the basics of animating drawings, sculptures and digital material. Experiment with stop-motion, 2D and 3D animation techniques, and also explore how sound can be used to enhance their effect. You'll also have ample opportunity to develop your own work.

Digital Development

Through practical workshops, you'll learn how to document and present your work through a range of digital media, and discover how this can benefit the development and distribution of your art. This course will guide you step-by-step through subjects such as photographing works, post-production, file handling, PDF creation and website building.

Digital in Practice

Develop your interests and visual language through time-based media. It will give you the critical and technical guidance needed to concisely communicate your ideas through your work. The course starts with thematic sessions, before allowing you to focus on developing your own work.

Moving Image

This course will enable you to become more familiar with moving image and audio-visual media, its production and presentation. Through the study of contemporary and historical practitioners of video art and the creation of your own work, you will be encouraged to consider how contemporary visual culture and our familiarity with the "screen" could affect the content and presentation of a video and in turn the experience of the viewer. A series of practical workshops will introduce you to using a camera and post-production software. In the latter weeks of the course you will apply the skills acquired to develop a personal project under guidance from the tutors.

Extended Reality

This course is an introduction to creating Extended Reality (including Augmented and Virtual Realities), with a focus on using this technology in your own art practice. You will learn the fundamentals of how immersive technologies function and gain a technical understanding of key software to help realise your own ideas and understand how this new medium can engage in a meaningful way at the intersection of physical and digital realities.

The Photographic Image

Starting with the fundamental principles of photography, you'll learn how to expose images correctly and develop a greater understanding of the medium in relation to today's digital culture. You will learn all aspects of using a digital camera, including: aperture, shutter speed, ISO, focus, depth of field, lighting and everything you need to successfully take photos in a variety of environments. You'll also be taught the fundamentals of Photoshop, with a focus on how the software can be used for retouching and collaging photographs.

Sculpture & 3D

Collage 2D & 3D

This course will introduce you to two and three dimensional collage. Throughout the course, you'll explore how and why contemporary artists employ collage within their practice, applying your findings in the creation of your own collages using a range of found objects and imagery. You will be encouraged to transform the meaning and function of these objects and images, pushing them into the realm of the surreal and abstract by building onto them, layering, cutting and covering them to create resolved works through the assemblage of different forms.

Figure Sculpture: Observation, Anatomy and Measurement

Studying directly from a life model, you'll sculpt the full figure on a half-life scale in clay. You'll learn the essentials of construction, including various techniques in observation, measurement and use of a plumb line, and combine these modelling skills with fundamental anatomical knowledge. You'll also gain an understanding of the importance of capturing gesture and proportion.

Sculptural Ceramics

An exciting and unusual opportunity if you'd like to work with clay without an inner armature structure, this course aims to introduce the wonders of using clay, and gives you a chance to explore a range of hand-building techniques to create a sculpture. Coiling, slabbing, straightforward hand-building and press- moulding techniques will be used alongside basic decorative finishes such as oxides and slips. You'll also develop your own project piece - figurative, abstract or conceptual – based on your interests.

Sculpture in Practice

Explore a wide range of sculptural forms, language, materials and processes with this course. Develop your own approach – whether you want to explore a wide range of materials and techniques, or focus on a particular area of interest.

Site-Specific Sculpture

This is an opportunity for you to build the skills, confidence and understanding to produce large-scale sculptures that will make a real contribution to the public realm. You'll study the formal elements of design (line, tone, colour, texture, form and composition), and how they interact with a larger contextualising space. You will also look at the historical lineage and current concepts of site-specific sculpture.



Tutor Ellen Christiansen



Performance

A broad overview and introduction to this dynamic field of art practice, here you'll explore different approaches such as; the body as medium, sound work and making performative objects. You'll develop your own performance and critically question if performance can be defined as a medium or a means to question our relationship with our environment.

Textiles, Latex and Assemblage

This elective provides an introduction to the processes and techniques of textiles within fine art practice. You'll explore different methods, materials and processes, including embroidery and the sampler tradition, wet and dry felting, latex and soft sculpture. You'll use both traditional and modern approaches to textiles to better understand the qualities of materials, their construction and the meaning of using textiles in contemporary art practice.

Metal Sculpture

This course will teach you to cut, weld, grind and manipulate steel and aluminium safely. Starting with these practical skills you'll then have the opportunity to work independently and develop a sculpture in metal.

Painting

Painting: architecture & environment

This course explores how painting can describe and interact with the language of architecture, environment, and space. The course introduces diverse painting approaches and surfaces, and covers a range of themes including working from moving images, 3D and site specific painting, city edges and borders. Drawing on a range of source material from film and photography to sketching and study trips, you will build an exciting new painting vocabulary before completing your own ambitious project in the last three weeks of the course.

Contemporary Still Life

Develop your approach, understanding and engagement with painting through the genre of Still Life. You'll look in-depth at the work of both contemporary and historical artists for whom still life is a major focus and discuss why the genre is still relevant today. You'll consider the use of objects for their symbolic value as well as their aesthetic properties.

Abstraction 1

This is a course crafted for both 'figurative' and 'abstract' artists. You'll be introduced to the principles of abstract art and the connection between representational art and abstraction. You will examine new visual languages, different methods of applying (and removing) paint and learn to hone your compositional eye. You will gain an understanding of how to organise space and colour, how to make more evocative and less literal gestures.

Abstraction 2

Here you can develop a greater understanding of abstract painting. You will look at technical and methodical approaches to painting in a broad sense, but also critically consider 'abstraction' and 'abstract painting.' You will develop a visual and verbal vocabulary allowing you to talk about your own work and potentially develop areas for further exploration.

Composition in Contemporary Painting

In this course, you'll investigate how paintings are put together and why, challenging your own assumptions to develop your individual painting practice. You'll explore four overarching themes: how composition impacts our reading of a painting; painting within a digital age; using multiple viewpoints and perspective to construct space; and paintings that deal with the body within fragmented space. You'll develop your understanding of these themes both practically through painting, and contextually by looking at relevant contemporary and modern artists.

Composition with the Portrait and Figure

Explore approaches to compositions featuring portraits and figures, with an emphasis on the placement of the figure within space. You will be able to develop skills in figure painting and will gain a broad and varied understanding of figurative painting, portraiture, design and composition, monotone and colour painting techniques and the use of acrylic and oil paint.

Cultural Inspirations for Painting the Figure

This is an opportunity to think more carefully about the context within which you paint a portrait and your intentions for your painting. You'll consider how you might work with a model in creating paintings, using wider cultural references to bring a different layer of meaning to the works you produce. You will work throughout the course with access to a model and an expert portrait and figure painter. Drawing inspiration from art movements, other artists, theatre or film sets, literature or your own ideas, you'll establish a series of scenes or poses and use these as the basis for your paintings.

Nude Figure Painting

This course will introduce you to painting the nude figure. It will help develop your understanding of colour mixing, looking at proportion, considering negative space and finding shapes to help create a likeness and develop compositions. You'll learn how to create figure paintings by starting with drawing, how to paint fabrics and materials as well as the figure, and how to consider the background as an integral part of the painting.

Exploring Current Trends and Styles in Portrait Painting

Examining the work of contemporary figurative artists, you'll discuss their style and subject matter to get a better understanding of what you can learn from them when developing your own style. The course is centred around practical

investigation with a different focus each week, inspired by an individual or group of artists.

Exploring Watercolour and Ink

This course introduces you to the water-based mediums of watercolour and ink. You will work responsively both indoors and outdoors, exploring the particular qualities of the water based mediums of watercolour and ink, learn to use them in combination with drawing and then develop your observations into finished artworks in the studio.

Figure and Portrait Painting

Taught by experienced, pre-eminent portrait and figure painters, this course introduces you to different approaches to portraiture and figure painting. The course runs every term with different tutors, and a slightly different emphasis (to include portraiture, figure painting and life painting). Working with a model on a series of poses, you will deal with tone and colour, proportion, lighting, composition, negative space, and will consider how to create a narrative depth.

Fundamentals of Portraiture

Intended as a revision course, this course examines fundamental aspects of portrait painting to ensure you have a comprehensive understanding of the techniques and skills required. You will analyse form and colour, consider again the handling and mixing of colour, and how it applies to portrait painting.

Painting from Photographs

You'll explore the skills required to achieve effective results when working from photographs instead of from life. You will consider the problems of painting from photographs and ways of overcoming these, as well the advantages of working from photographs. The course will introduce the skills needed to produce photo realistic images, but doesn't limit you to painting in this way.



Images in Contemporary Painting

The proliferation of digital images in society has made the image more disposable and less open to visual critical discourses. This course will also explore how the manipulation of pictorial space can create new and exciting directions in painting – by fragmenting, obscuring and intertwining images into the pictorial space and by using a series of techniques and conceptual approaches that question the normal conventions of background/foreground relationships.

Introduction to Oil Painting

Gain an understanding of how to work in oil paint and the practicalities of using oil painting materials. You will gain the confidence to work in oils and your tutor will help you start to develop a technical skill that can be used successfully to convey your visual ideas.

Contemporary Painting: exploring techniques, materials and surfaces

This course aims to explore, test, and discover the properties and potential of a range of traditional and non-traditional paints and surfaces. You will expand and develop your understanding of what paint can do, and the specific material qualities of numerous paints. You will investigate how various paints (including acrylics, spray paints and gloss paints) feel and handle, and how you can use different approaches with them.

Paint Application in Portraiture

Our course all about paint. You'll work with several different tutors, all of whom are practising portrait artists using very different painting techniques. You'll explore different ways of applying paint, including using vibrant colour expressively, using thick paint, working in tone, layering paint and using glazing techniques, and using different materials such as acrylic paint and egg tempera.

Painting in Practice

Discover what it is about painting that motivates and inspires you. You will explore how to develop ideas from initial sketches, how to refine ideas and how to develop coherent work. You will be encouraged to adopt a disciplined creative thinking dialogue in your painting practice which will enable a more informed approach to your work.

Painting Portraits from the Masters

Study and analyse the approaches taken by great portrait painters from the past and learn how to apply the techniques and approaches used by these artists. Working directly from paintings in London galleries and then painting in the studio, you will analyse their work and create copies of well-known portraits. This course will culminate in you developing a portrait of your own, influenced by artists you have been studying.

Self Portrait

Explore painting using yourself as your subject matter, be it from direct observation, photography or other mediums. You will discover ways of generating images by examining different aspects of yourself; through ideas of identity, gender, social and familial connections, memories, aspirations and even through the use of costume and allusion. We will start with the technical aspects of painting, looking at the complications that arise and possible solutions, from which you can begin to adopt approaches that best suit you.

Shape of Colour

This course looks at colour as form and will enable you to think about colour theory and a synthesis of processes, structure and surface. You will be encouraged to consider how you develop a composition, specificity of colour choice and surface fracture (handling of the paint). You will be encouraged to experiment with colour itself, developing the interaction of colour.



Yin Wang

Drawing

Materials & Mark-Making

This course investigates the power, possibilities, and meaning of mark making in drawing. Each week you will approach mark making from a different perspective, contextualising your work through discussion of contemporary and historical artists who use drawing in their practice. Test materials and experiment, use time and process to layer marks and create drawing devices from objects, developing a vocabulary of mark-making.



Measurement & Proportion

In this course you will use systems of measurement to create drawings from life and two-dimensional sources. You'll make a series of drawings from life before embarking on your own, individual, project using observation and photographic sources.

Anatomy

You'll focus on a different section of the human body each week, looking at bone and muscle structures in particular. You will gain the knowledge that will allow you to question and assess the way you draw the human figure from life and examine your drawings in relation to your understanding of anatomy.

Contemporary Life Drawing

Traditional, skill based life drawing is complemented with contemporary drawing approaches in this multifaceted drawing course. Working with life models throughout, students will begin the course by learning fundamental observational drawing skills. This grounding will instil a practical knowledge and confidence, which will then be used as a springboard for expanded ways of working and thinking. The drawing process will be firmly acknowledged as an art form in itself. Through innovative practical exercises, formal experimentation, group discussion, you will receive a holistic approach to drawing.

Imaginative Composition

In this course, you'll explore the process behind making imaginative, figurative compositions. Drawing and visualising images that are in your imagination is difficult to do - this course looks at various techniques artists use to bring an imagined image into reality. Much of the course focuses on acquiring the skills and information necessary to construct imagined compositions, encouraging a variety of approaches and experimentation.

Luminosity

Study the elusive yet magical qualities that emanate from an eclectic range of lit objects. You'll experience the familiar transformed into the unfamiliar through the beauty and drama of light and luminosity. You will gain a better understanding of the reading and recording of light on, around and within lit surfaces and the ability to perceive fine gradations in subject matter.

Portrait Drawing

Develop your portrait drawing skills in this course, focusing on aspects such as facial proportion, facial anatomy and skull structure. You'll draw from live models in a range of materials, including charcoal, graphite and Conté, and create anatomical drawings of the skull to develop your

understanding of the structure and form of the head. You'll then use these skills to complete a sustained three-week portrait drawing towards the end of the course.

Space and Structure

This course aims to deepen your understanding of space and structure in drawing using both 2D and 3D techniques. You'll explore different ways of creating levels of space such as geometric perspective and layering, and also explore movement, scale and mass by developing off-site architectural and structural drawings. The course will also cover alternative approaches to drawing, including working with shadows and lit structures, drawing in 3D and using drawing to respond to real space through spatial intervention.

Printmaking

Bookbinding with Relief Printing

This is an exciting opportunity to learn about different book structures and binding techniques, while incorporating reduction linocut and multi-plate woodcut prints. You'll learn how to use basic bookbinding tools to create leporello (concertina), stab-binding and single-section binding book structures, and gain a contextual understanding with a visit to Tate Britain's Artist Book Collection.

Drawing into Print

Using print techniques related to monotype (drawing into a field of ink with a range of implements), etching and drypoint (drawing with a needle into media such as plastic or metal); and various reproduction, collage and transfer methods, you will produce a series of prints which have moved through stages of development from observational drawing through to print and back again.

Etching: Hardground, Softground & Aquatint

Focusing on line, texture and tone, this course explores painting through etching; an approach originally utilised by Francesco Goya and still employed by contemporary artists today. Using a low-toxic saline sulphate mordant, you'll learn to paint with sugar and etch aluminium and zinc plate to realise a series of print editions.

Hybrid Printmaking

By experimenting with a combination of techniques including simple block-print, etching, collagraph and mono-print, you'll develop a print or series of prints. Printmaking both complements and brings perspective to other areas of creative practice, so this course is ideal for painting and drawing practitioners who would like to gain a perspective of print techniques and re-engage with the drawn mark.

Immediate Printmaking: Drypoint, Carborundum & Collograph

Explore intaglio and relief techniques in this course, using texture and tone to make prints that are both painterly and graphic. You'll learn to use monoprint, collagraph and drypoint plates in a low-toxic environment to develop a fast and immediate style of printmaking. This course is ideal for students who wish to bring their drawing, texture and colour skills to the print studio, to complete a series of multi-plate colour prints in a unique self-led project.

Photography in Print

Combining photosensitive emulsion and plates with intaglio printing, this course focuses on photomechanical techniques in printmaking. You will learn to expose and develop autographic (drawn and painted) and digitally generated/ photographic images with both different types of plates.



Printmaking in Practice: Intaglio & Relief

You will need to have completed another Printmaking course before you can take part in either of our Printmaking in Practice courses. These two courses are aimed at students who have undertaken a number of other print courses or are near to completing their studies for the Certificate or other academic programmes. These courses enable you to continue to receive a high level of technical tutoring without having to repeat skills modules you have already completed. Projects can be research-based (e.g. investigating colour printing techniques) or subject-based (e.g. developing a single edition or a series of prints based on a particular theme). Your tutor will respond to your ideas and develop, with you, a programme of study tailored to your needs.

Reduction Relief: Linocut, Linocut and Woodcut

This course focuses on form and colour through reduction relief printmaking; a traditional and immediate sculptural approach to print using professional Japanese woodcut tools. This course is ideal to develop your colour skills, learning how to apply multiple colour combinations to wood and linoleum blocks to expand your printmaking knowledge and develop a self-led project.

Relief-Printed Textiles

Here you'll focus on using intaglio and relief techniques to print onto textiles. The course will also introduce the use of finer textiles such as silk to rethink and reformulate the traditional two dimensional printed image. Looking at artists from the Bauhaus such as Anni Albers, we will explore print as a means of creating a 'total' artwork that aspires to work with architecture and interrupt the flow of our perception through it. This course is ideal if you'd like to bring your communication, texture and colour skills to the print studio, to become familiar with a diverse and exciting range of media. You will expand your knowledge and develop a unique self-led project.



Etching: Spitbite, Sugarlift and Gum Arabic

In this course, you will focus on painting through etching; an intaglio approach to print, originally utilised by Francesco Goya to combine the tone of aquatint with the daubing and spraying of painterly brush marks. You will learn to paint with sugar and etch both aluminum and zinc plates to realise a series of print editions.



Sophia Kisielewska-Dunbar

MA Fine Art

We'll be launching our new MA in Fine Art in September 2025*, harnessing our unique approach to skills tuition and professional development to create an exciting programme of postgraduate study.

Get in touch if you are interested in hearing more about our MA in Fine Art

academiccourses@artacademy.ac.uk

**Subject to validation by the Open University*



Studying Here

The Academy is a true artistic community; an environment of vibrant exchange where you learn from expert practicing artists and wide-ranging creative stimuli.

your art work with a visiting tutor of your choice.

Student Support

At the Academy we want to support you on every step of your journey with us. High levels of support and guidance are an integral part of the Academy's ethos and are designed to help you from first inquiry to the completion of your studies. The small scale of the institution makes it possible for us to provide high levels of student support. It fosters a close community of staff and students where students feel safe and able to seek advice and guidance from our staff.

One-to-one tutorials

Undergraduate students are allocated a Personal and Academic Tutor who is responsible for pastoral care and overseeing academic progress.

On the Foundation, students meet one-to-one regularly with the Programme Leader and Certificate students have a termly one-to-one tutorial with their Programme Leader.

Artistic tutorials

Undergraduate students have the opportunity for termly artistic tutorials throughout the first two stages of the programme. Artistic tutorials are in addition to 1-2-1 teaching and tutorials undertaken in Elective Skills Workshop and during assessed modules. Artistic tutorials have a wide and open brief, giving you the opportunity for focused, 1-2-1 creative and technical feedback on

Space to create

We offer a rich, diverse ecosystem of materials, technologies, processes, and practices. Our facilities include:

- Dedicated studio space for our Foundation and Undergraduate students (Stage 2 and 3) to work on their personal projects.
- Six teaching studios
- Specialist print studio
- Wood and metal workshop and 3D printers
- Ceramics and stone carving studio, with both ceramic and glass kilns
- Digital suite equipped for video editing, photography and filming, photographic retouching, printing and more.
- Library

In 2024 we will be expanding into our new Bankside Campus. Next door to Tate Modern, this purpose built campus will be fully accessible and include:

- 9 state of the art teaching studios
- 2 gallery and exhibition spaces
- An auditorium
- Specialist workshops
- A cafe and art supplies shop open to the public

A vibrant, creative epicentre

When you start at Art Academy London, we'll introduce you not just to the way we work, but also how to enjoy studying in the vibrant creative epicentre that is London.

Since 2000, we've been based at the heart of Southwark, close to some of the city's best galleries and museums including: Tate Modern, the Hayward Gallery, Jerwood Space, White Cube Bermondsey, Drawing Room and the Menier Gallery.

We're also just a step away from the Bankside Cultural Quarter, which includes the world-renowned Borough Market and amazing street food of Flat Iron Square, the old wharves of Clink Street, and performing arts theatres such as Shakespeare's Globe and the Southwark Playhouse.

When you study with us, we want you to be part of the social and artistic life of our college. With our strong ties to the local area, our students get to take part in some great community art projects - from hosting pop-up life drawing classes at London Bridge station to creating murals for Southwark street festivals.

We encourage cross-college artistic and social events as part of Freshers' activities in order to welcome you into the Academy community, and the Academic Team and Student Council organise events throughout the year to maintain and develop your sense of belonging.

We are vibrant, diverse and inclusive. You'll join people from all walks of life, at all stages of study, who make up the colourful tapestry that is our community. We believe this makes the Academy a truly unique place to study.

Supporting students with Special Educational Needs and disabilities

The Academy is committed to supporting accessible learning and welcomes students with disabilities and Special Educational Needs.

Our SEND coordinator supports students and enables students to access the curriculum successfully during their time at the Academy. A bespoke programme of Elective Skills Workshops will be mapped for each student if necessary, and alternative assessment models employed where appropriate in order to provide parity of opportunity with non-SEN students.

Good accessibility practices and the needs of disabled students in academic provision are reviewed on a case-by-case basis, with all reasonable adjustments such as the re-timetabling of studios and alternative assessment arrangements considered in order to provide services and equal educational opportunities to the individual.

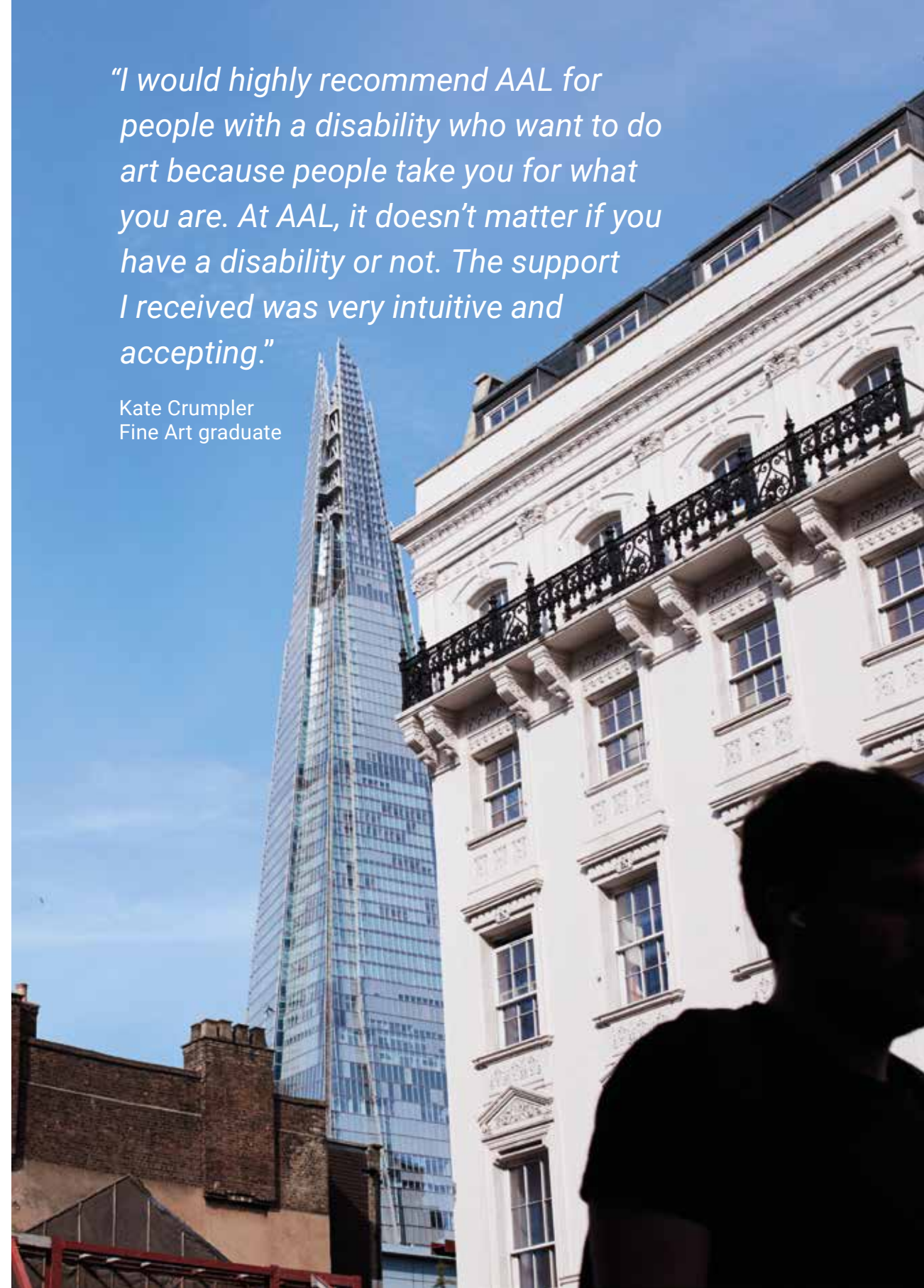
For more information, or if you have any questions about how we can support your specific needs please contact us directly.

Accommodation

If you're looking for a place to live be sure to download our Accommodation Pack for an introduction on how to find safe and affordable living options. Please visit our website or call us directly to discuss your options.

"I would highly recommend AAL for people with a disability who want to do art because people take you for what you are. At AAL, it doesn't matter if you have a disability or not. The support I received was very intuitive and accepting."

Kate Crumpler
Fine Art graduate





Tabitha Rose

Graduate Show

All Academic students will participate in the Graduate Show at the end of their studies. Open to the public, the show is the culmination of your all your hard work.

The exhibition is part of your final assessment. It's an opportunity to show your work to potential buyers. Gallerists and press, as well as to family and friends.

You'll gain experience of preparing your work for exhibition, preparing a space for the display of work, providing images and details in formats galleries require, and promoting yourself and your work.


2024 Graduate Show

Our next Graduate Show will be open to the public from 21st to 23rd June, 12 noon to 5pm. Do come along and take a look at what our current students have produced over their time studying with us.

Open Studios

In addition to the Graduate Show, we host Open Studio evenings at points throughout the year, where BA students invite friends, family and the public in to the studio to see what they are working on.

See page 54 for the date of the next Open Studio, or check our website for future dates.



“From taking my first class in printmaking, enrolling on the certificate course, and then completing a Fine Art BA, my experience at AAL has been fantastic. Spending the last few years here has been amazing.”

Katy Cook
BA (Hons) Fine Art

Application Process

We welcome applications from all enthusiastic candidates. We assess every application on individual merit and your potential to succeed on your chosen programme of study. It's an individually tailored but consistent approach.

You'll need to complete an application form (available on our website), and submit it along with supplementary images of your work. We'll then get in touch to arrange an interview.

The interview takes approximately 45 minutes. You'll meet with one or two interviewers to discuss your application and review your portfolio; we'll ask to see examples of finished pieces, and the development of a project (for example, a sketchbook or preliminary sketches and research). Through this, we'll assess your level of artistic skill and potential, as well as try to understand your enthusiasm, creative process, ideas and areas of interest.

We pride ourselves on having a diverse student body, and we appreciate that not all applicants come to us with standard qualifications. We consider applicants with a wide range of equivalent qualifications and professional experience.

At this time we are unable to support international students on our programmes.

For more details about the specific application process for each programme, including Certificate, visit our website at artacademy.ac.uk/application-process

Creating a Portfolio

As part of the application form, BA and Foundation students will be asked to submit a digital portfolio, so that we can assess your suitability for the programme ahead of a physical interview. Certificate students also need to present a selection of their work.

Digital portfolio requirements vary for each programme, full details and guidance can be found on our website.

For interview you'll need to bring a physical portfolio with you. This doesn't need to be completely different content to the digital one. Your physical portfolio does not need to be mounted or 'presented', but rather a collection of work. You should, however, consider the order in which you wish it to be viewed. For both digital and physical portfolios you should include evidence of:

- Drawing
- Finished work
- Work that demonstrates your range

Please visit our website for more information about portfolio guidance for each programme.

Funding & Bursaries

Bursaries

Many students come to us with the determination and talent to make it as practising artists, but lack the financial means to fulfil their potential. In the current climate, we believe that students need as much help as possible to enable them to study Fine Art. At the Academy, we are passionate about finding ways to make this happen so we provide a number of bursaries every year to our academic students studying on our Foundation or Undergraduate programmes.

You can apply for a bursary once you've been offered a place on one of our programmes. If you have a low annual household income, or other exceptional circumstances, you may be eligible for a bursary. This covers up to 30% of the annual tuition fees. Bursaries are assessed on an individual basis, based on need as well as merit, and are awarded at the Academy's discretion.

We occasionally have more generous bursaries or prizes available. See our website for details or ask when you apply.

Please note, you'll need to provide evidence of income to support your application for an Academic Bursary. For further information about bursaries, including how to apply, please contact our academic team at: admissions@artacademy.ac.uk

Funding

We're an independent institution and arts charity and don't receive public funding. This means that we can't offer access to student loans or exemption from fees for under 19 year olds. We're working towards accessing funding streams for student support in the future for our Undergraduate programmes. Payment plans are available to help you spread the cost of the tuition fees. Please get in touch for further details.

Additional Costs

The fees above don't take into account additional costs, such as materials, accommodation, travel and usual living expenses. While some basic materials are provided for certain Elective Skills Workshop courses, you will need to cover other costs such as those associated with the Graduate Show and materials required to successfully complete the course. We estimate that these costs will be £200 - £600 p.a. for Certificate, £300 - £700 p.a. for Foundation and £500 - £1,500 p.a. for our BA programmes. Please note, this is an estimate for guidance only (based on survey results from previous students); actual expenditure will vary, depending on the nature of the practical work you choose to make.



"Starting this course wasn't something I imagined for myself - in England people don't really get scholarships so I never thought this would be possible."

Chikaora Obiora
BA (Hons) Fine Art Scholarship

Chikaora Obiora receiving her scholarship at our annual fundraising auction at Christie's

Visit Us

Open Days & Open Studios

To offer you a chance to experience the vibrant and stimulating atmosphere at the Academy first-hand, we have a series of Open Days and Open Studios. You'll meet staff and students, learn about our courses and facilities, find out more about our unique approach to teaching, and see work created by current students.

Open Day & Open Studio

1st November
Open Day: 2pm to 4pm
Open Studio: 4:30pm to 7pm

Open Studio

25th March 2024, 5pm to 7pm

Graduate Show 2024

21st to 23rd June, 12 noon to 5pm

If you can't make one of our open days, please do get in touch to arrange an alternative time to come in and have a private tour. In addition, we're always happy to chat through the application process and answer any questions you may have.

See our campus

Art Academy London – Mermaid Court

165A Borough High Street
London SE1 1HR
tel: +44 (0) 207 407 6969

Nearest Tube/ Rail: London Bridge or Borough. Both are a 5 minute walk. Please note that London Bridge has two exits, the most direct route is to follow signs to "Borough High Street".

Coming Soon:

Art Academy London – Bankside Campus

Triptych Bankside
185 Park St, London SE1 9SH

We're a Charity

AAL remains as committed as ever to its guiding principle of making art accessible to all, and as an art education charity, central to our ethos is to enable wider participation, accessible learning, and inclusivity in arts education - reflected in our choice of The Open University as our validating partner.

We provide support to a third of our undergraduate students through bursaries to reduce tuition fees, run (an expanding) offer of community outreach activities to help make art education more accessible for people at both a local and national level and offer free CDP to art teachers.

If you want to find out more about making a donation, regular giving or our patrons scheme contact Sophie Singh
sophie@artacademy.ac.uk

Talk to us

For all queries about academic courses, call +44 (0) 207 407 6969 or email academiccourses@artacademy.ac.uk

For all other queries, please contact info@artacademy.ac.uk

Follow us on socials:

Instagram: [@artacademylondon](https://www.instagram.com/artacademylondon)

Twitter: [@artacademy](https://twitter.com/artacademy)

Facebook: [/artacademylondon](https://www.facebook.com/artacademylondon)

